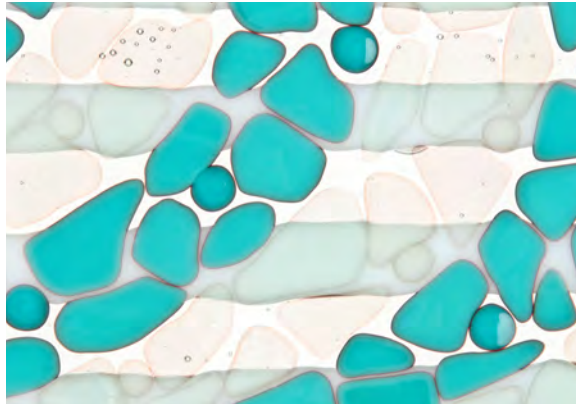




## Get Reactive in System 96



*Thin red outlines are formed when these Mosaic frits are fused touching Red Reactive sheet glass.*

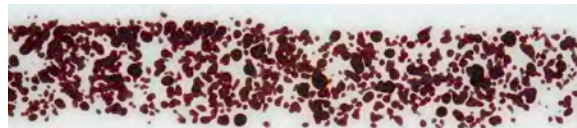


*Red Reactive Transparent and Red Reactive Opal is available as Sheet glass, Frit, Noodles, Stringer and Rods.*

**UROBOROS has created two unique glass formulas for System 96** that are designed to create an interface color, or a “reaction”, when melted against certain other colors. This occurs when ions from the two adjacent glasses migrate and mingle when the glasses become hot and fluid. Given the right glass chemistry, the comingled ions form a very thin colored line, or “reaction”. Since our formulas react to create a noticeably reddish hue we named them Red Reactives: as in Red Reactive Transparent, and Red Reactive Opal.

The primary ingredient needed in a partner glass to generate a reaction color with our Reactive glass is Copper. Copper is present in many blue and blue-green glass colors, but in some cases in too low a concentration to create a noticeable reaction.

For simplicity, all System 96 partner colors have been graded for their potential to react into three categories: Strong, Medium, and Mild. You will find that the intensity of the reaction color will get stronger with longer, hotter, or repeat firings. This is because the copper ions have more time to mingle with their friendly reactive partners in the adjacent



F3-5333-96 Deep Aqua Medium Frit



F7-2334-96 Turquoise Opal Mosaic Frit

*Some colors turn completely red while others develop a red interface outline. Both frits here were fused on Red Reactive Opal.*



*Rectangular Platter: Transparent and Opal frits fused on strips of Red Reactive Opal and Red Reactive Transparent.*



*Wisteria Blossoms: A variety of blue and green frit react to a base of Red Reactive Transparent.*

## Get Reactive in System 96

*continued*

glass. See them all listed in the Red Reactive Glass Partner Color Chart on page 3 (this chart is also available as a PDF download from the Uroboros website in the Info Center, PDF Library). The chart rankings are based on a typical single firing cycle. You could get a Medium reaction from a color graded as Mild by firing it hotter or firing multiple times.

Reactive partner frit colors of Ming Green and Turquoise Green Opal are fused on alternating strips of Red Reactive Opal (60-045-96) and Red Reactive Transparent (60-003-96).

### **Frit Colors Used in Rectangular Platter:**

F7-774-96 Ming Green

F7-2232-96 Turquoise Green Opal

The copper in transparent blue and green frit creates shades of rose, plums and magentas when fused to Red Reactive glass.

### **Wisteria Blossoms Base Glass:**

60-003-96 Red Reactive Transparent

13-5605-96 Black and White Mardi Gras:

### **Frit Colors Used:**

F5-125-96 Dark Green

F5-774-96 Ming Green

F5-5232-96 Teal Green

F5-1308-96 Pale Blue

F5-132-96 Light Blue

F3-5238-96 Hunter Green

*(more)*

# Red Reactive Glass Partner Color Chart

## SHEET GLASS



COLOR DESCRIPTION	SHEET PRODUCT ID	RED REACTIVE		AVAILABLE FORM: S-Sheet, F-Frit, R-Rods, B-Billets & Casting Rocks N/S-Noodles & Stringer
		TRANSPARENT 003-96	OPAL 045-96	
Dark Green	125SF	Medium	None	S, F, N/S, R
Pale Blue	130.8SF	Medium	Mild	S, F
Light Blue	132SF	Medium	Mild	S, F
Dark Blue	136SF	Strong	Mild	S, F, N/S, R
Dark Green Opal	220.76SF	Strong	Medium	S, F, N/S, R
Turquoise Green Opal	223-72SF	Medium	Mild	S, F, R
Dark Blue Opal	230-76SF	Strong	Strong	S, F, N/S, R
Turquoise Blue Opal	233-74ST	Strong	Strong	S, F, N/S, R
Mariner Blue Opal	233-75SF	Strong	Strong	S, F
Alpine Blue Opal	238-72SF	Strong	Medium	S, F, R
Aqua	60-402-96	Medium	Medium	B
Aqua Iridescent	60-402-96 IR	Medium	Medium	S, F
Riviera Blue Opal	60-421-96	Strong	Medium	S, F
Teal	523-2SF	Medium	None	S, F
Hunter Green	523-8SF	Mild	None	S, F
Caribbean Blue	532-1SF	Strong	Medium	S
Sky Blue	533-1SF	Strong	Medium	S, F, R
Deep Aqua	533-3SF	Strong	Strong	S, F, N/S, R
Light Steel Blue	538-2SF	Strong	Medium	S
Apple Jade Opal	60-726-96	Medium	Mild	S
Ming Green	60-774-96	Mild	Mild	S, F, R, B
Ming Green Irid	60-774-96 IR	Mild	Mild	S, F

### Specialty Sheet Glass

### Style

Emerald Green Fracture	11-25-96	Random Areas	Random Areas	Fracture/Streamer
Emerald Green Fracture	11-29-96	Random Areas	Random Areas	Fracture/Streamer
Emerald Green Fracture	11-45-98	Random Areas	Random Areas	Fracture/Streamer
Emerald Green Fracture	11-51-96	Random Areas	Random Areas	Fracture/Streamer
Deep Aqua	13-5333-96	Exposed Frit/Stringer	Exposed Frit/Stringer	Mardi Gras
Cascadia Blue	OA/233-54SF	Exposed Swirls	None	Opal Art
Lagoon Green	OA/623-52SF	Exposed Swirls	None	Opal Art

# Red Reactive Opal Color Chart

## FRIT



Uroboros Frit Product Numbers	125-96	1308-96	132-96	136-96	2206-96	2232-96	2306-96	2334-96	2335-96	2382-96	421-96	5232-96	5238-96	5331-96	5333-96	774-96
	Dark Green	Pale Blue	Light Blue	Dark Blue	Dark Green	Turquoise Green	Turquoise Dark Blue	Turquoise Blue	Mariner Blue	Alpine Blue	Riviera Blue	Teal	Hunter Green	Sky Blue	Deep Aqua	Ming Green
	Opal	Opal	Opal	Opal	Opal	Opal	Opal	Opal	Opal	Opal	Opal	Opal	Opal	Opal	Opal	Opal
F1 Powder																
F2 Fine																
F3 Medium																
F5 Coarse																
F7 Mosaic																

Frit full fused to White Opal (60-05-96) to show color before reaction.

Frit in all 5 sizes, full fused to a sheet of Red Reactive Opal (60-045-96)

# Red Reactive Transparent Color Chart



## FRIT

Uroboros Frit Product Numbers	125-96	1308-96	132-96	136-96	2206-96	2232-96	2306-96	2334-96	2335-96	2382-96	421-96	5232-96	5238-96	5331-96	5333-96	774-96
	Dark Green	Pale Blue	Light Blue	Dark Blue	Dark Green	Turquoise Green	Turquoise Dark Blue	Turquoise Blue	Mariner Blue	Alpine Blue	Riviera Blue	Teal	Hunter Green	Sky Blue	Deep Aqua	Ming Green
F1 Powder																
F2 Fine																
F3 Medium																
F5 Coarse																
F7 Mosaic																

Frit full fused to Clear (60-00-96) to show color before reaction.

Frit in all 5 sizes, full fused to a sheet of Red Reactive Transparent (60-003-96)