

## ARCHITECTURAL GLASS

Made by Pilkington, Vasa & Glaverbel, Architectural Glass features bright textures on clear glass. This glass offers plenty of light transmission with great obscurity. Most AG glass is 3 to 4 mm thick (about 1/8 to 5/32").



**AG 01**  
everglade  
code A

15% actual size



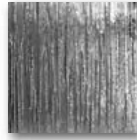
**AG 02**  
autumn  
code A

15% actual size



**AG 03**  
sycamore  
code A

15% actual size



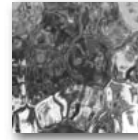
**AG 05**  
cotswold  
code A

15% actual size



**AG 06**  
driftwood  
code A

10% actual size



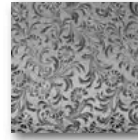
**AG 08**  
English Flemish  
code A

10% actual size



**AG 11**  
1/2" reeded  
code A

15% actual size



**AG 12**  
floreal  
code D

15% actual size



**AG 17**  
corduroy (9 reeds/inch)  
code N

25% actual size



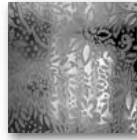
**AG 18**  
morisco  
code D

20% actual size



**AG 19**  
pelerine  
code A

15% actual size



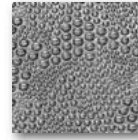
**AG 24**  
chantilly  
code A

15% actual size



**AG 27**  
tafetta  
code A

10% actual size



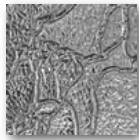
**AG 32**  
waterdrop  
code M

25% actual size



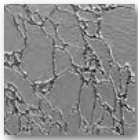
**AG 33**  
winterlake (glacier)  
code K

33% actual size



**AG 70**  
faux crackle bright  
code O

33% actual size



**AG 71**  
faux crackle sandblasted  
code L

15% actual size



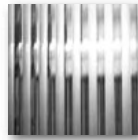
**AG 82**  
aero  
code N

10% actual size



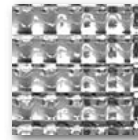
**AG 85**  
chinchilla  
code N

10% actual size



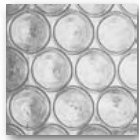
**AG 95**  
1/2" frosted flutes  
code J

10% actual size



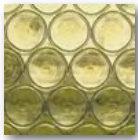
**AG 101**  
austral (1/2" cross-reeeded)  
code A

15% actual size



**AG 200**  
rondelite  
code R

10% actual size



**AG 201**  
amber rondelite  
code R

10% actual size



**AG 202**  
amber lozenge  
code J

10% actual size

### ARCHITECTURAL GLASS SHEET SIZES:

<input checked="" type="checkbox"/>	Small	8 x 12"	0.67 sq ft
<input checked="" type="checkbox"/>	Medium	16 x 12"	1.33 sq ft
<input checked="" type="checkbox"/>	Large	16 x 24"	2.67 sq ft

### Price Codes A thru D:

<input checked="" type="checkbox"/>	Stock Sheets	24 x 48"	8.00 sq ft
-------------------------------------	--------------	----------	------------

### Price Codes J thru R:

<input checked="" type="checkbox"/>	Stock Sheets	32 x 42"	9.33 sq ft
-------------------------------------	--------------	----------	------------

**Note:** Factory sheet sizes may vary from sizes listed above as sheet sizes vary from shipment to shipment. Many styles may be available in sheets larger than listed above.

**RESTORATION-STYLE GLASS**

Several manufacturers produce machine rolled products that have the look of old, mouth-blown window glass but without the hefty mouth-blown price tag.

**Restover**® **Machine Drawn** restoration-style glass is the glass of choice for restoration of pieces from about 1900-1950. A distinctive drawn and fire polished glass adds beauty and elegance to any light restoration project where early 1900's authenticity is required. It features a subtle wave and no seeds or defects, as illustrated above. Made in Germany by Schott Glass.

# AG 106, Restover Restoration Glass  
code G

**ReNova**™ **Rolled** restoration-style glass is a new entry in the restoration glass genre. This glass boasts a gentle wave, subtle distortion, limited seed content, consistent 1/8" thickness and uniform sheet size. Made in the US, this old world style glass will bring distinction to a window, transom, cabinet or fine furniture. It is perfect if you are looking for glass with only subtle "antique" characteristics. Can be tempered, but test first!

# AG 107, ReNova Restoration Glass  
code F



**RENOVA SHEET SIZE:**

<input checked="" type="checkbox"/>	Small	8 x 12"	0.67 sq ft
<input checked="" type="checkbox"/>	Medium	16 x 12"	1.33 sq ft
<input checked="" type="checkbox"/>	Large	16 x 24"	2.67 sq ft
<input checked="" type="checkbox"/>	Stock Sheets	24 x 48"	8.00 sq ft

**RESTOVER SHEET SIZE:**

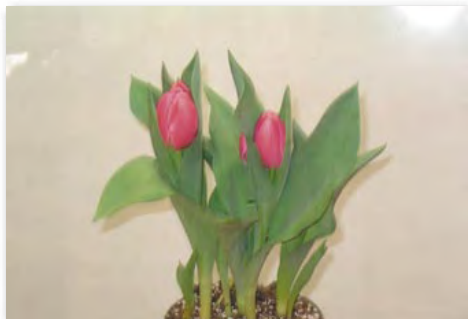
<input checked="" type="checkbox"/>	Small	8 x 12"	0.67 sq ft
<input checked="" type="checkbox"/>	Medium	16 x 12"	1.33 sq ft
<input checked="" type="checkbox"/>	Large	16 x 24"	2.67 sq ft
<input checked="" type="checkbox"/>	Stock Sheets	30 x 32"	6.67 sq ft
	-OR-	32 x 60"	13.33 sq ft

**MOUTH-BLOWN** restoration-style glass, produced by master craftsmen, is a beautiful balance of clarity and movement. It is exactly what you want if your restoration job calls for 100% authenticity when replacing blown glass from the pre-1900's. This glass is produced using the same techniques and materials as the original. It tends to have somewhat irregular imperfections and distortion. Due to the high cost of the requisite skilled labor, this glass can be rather expensive, but it has a character all its own. Made in Poland by Krosnos.

**KROSNOS SHEET SIZE:**

<input checked="" type="checkbox"/>	Small	8 x 12"	0.67 sq ft
<input checked="" type="checkbox"/>	Medium	16 x 12"	1.33 sq ft
<input checked="" type="checkbox"/>	Large	16 x 24"	2.67 sq ft
<input checked="" type="checkbox"/>	Stock Sheets	36 x 36"	9.00 sq ft

**Note:** Factory sheet sizes may vary from size listed above due to hand made nature.



**AG P1**  
light distortion  
code P



**AG P2**  
medium distortion  
"cordele"  
code P



**AG P3**  
heavy distortion  
"reamy"  
code P