

BOX HARDWARE

BOX HARDWARE is specially designed for use in making stained glass jewel boxes. All hardware solders easily to your glass box. Check our book section for titles on the subject. The selection of box hardware includes hinges for lids, feet for added interest, and solid brass decorative pieces to make your box one of a kind.

HINGES are all solid brass. There are two varieties: Tube or Pre-assembled.

1/4" Wide Pre-Assembled Hinges are sold in pairs and are simply soldered to the lid and the bottom. Choose from:

- 1 Pair (#3100)
- 10 Pair (#3101)
- 36 Pair (#3102)
- 72 Pair (#3103)



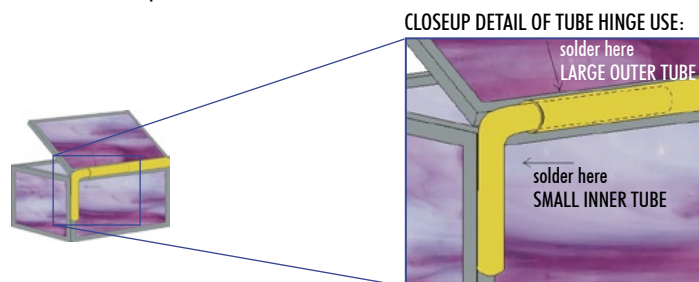
5/16" Wide Pre-Assembled Hinges are sold in pairs and are simply soldered to the lid and the bottom. Choose from:

- 1 Pair (#3110)
- 10 Pair (#3111)
- 36 Pair (#3112)
- 72 Pair (#3113)



Tube Hinges must be cut and assembled by you, but you may have more creative freedom with these hinges, as they can be made to any size or configuration. Cut with fine toothed hacksaw. Tube hinges are purchased in two sections:

- **Large Outer Tube** is soldered to the box top.
- **Small Inner Tube** is bent 90 degrees, one end inserted into the end of the Large Outer Tube (acting as the pivot), and the other end soldered to the box bottom. The Large Outer Tube then pivots around the Small Inner Tube.



TUBE HINGES	EACH	10 PCS.	100 PCS.
Large Outer Tube (12")	3130	3131	3132
Small Inner Tube (12")	3133	3134	3135

BUMPON CUSHIONS are made of self-stick polyurethane to protect both your tabletop and your box (or fused bowl, etc.). These flat-topped, clear, round little pads stick on, or peel off in seconds. Gives your box a nice solid feel when you set it down by preventing slippage and absorbing vibrations.

- **Pack of 12 (#3270)** -shown at right
- **Sheet of 100 (#32701)**
- **Box of 1000 (#32702)**



Brass Decor

Decorations are all made of solid brass and can be tinned and patinated to match the finish of your stained glass project (try Canfield's Solder Magic Action Tin #0678 for an easy solution to tinning your decor). They can add a little accent to your box, mirrors, picture frames, lampshades and the like. If you let them hang over the top lid a bit, they can be used as a little handle to open your box with (flower boughs, heart or corners soldered to the front edge of your lid make a perfect box opener).

ALL ILLUSTRATIONS ARE APPROX ACTUAL SIZE.



#9707
Small Flower Bough



#9708
Large Flower Bough



#9729
Medium Dragonfly



#9700
Flower Crescent



#9701
Ginkgo Leaf



#9702
Grapes



#9713
Medium Duck



#9705
Small Butterfly



#9714
Kitty



#9724
Cat



#9719
Small Fairy



#9720
Large Fairy



#9722
Santa Claus



#9717
Left Leaf



#9718
Right Leaf



#9723
Moon



#9725
Bells



#9727
Bow

DESCRIPTION	BRASS DECOR		
	EACH CAT #	12 PACK CAT #	144 PACK CAT #
Flower Crescent	9700	97001	97002
Ginkgo Leaf	9701	97011	97012
Grapes	9702	97021	97022
Butterfly, Small	9705	97051	97052
Flower Bough, Small	9707	97071	97072
Flower Bough, Large	9708	97081	97082
Duck, Medium	9713	97131	---
Kitty	9714	97141	97142
Leaf, Left	9717	97171	97172
Leaf, Right	9718	97181	97182
Fairy, Small	9719	97191	97192
Fairy, Large	9720	97201	---
Santa	9722	97221	97222
Moon	9723	97231	97232
Cat	9724	97241	97242
Bells	9725	97251	97252
Bow	9727	97271	97272
Dragonfly, Medium	9729	97291	---
Trumpet	9740	97401	97402
Saxophone	9741	97411	97412
Violin	9744	97441	97442



#9740
Trumpet



#9741
Saxophone



#9744
Violin

CHAIN

CHAIN comes in several weights and finishes to use with your stained glass project. Use JEWEL CHAIN for jewelry boxes and suncatchers; PANEL HANGING CHAIN to suspend your finished pieces. BALL CHAIN and LADDER CHAIN are great for decorative effects. **CHAIN PHOTOS ARE APPROXIMATE ACTUAL SIZE.**

JEWEL CHAIN is used for keeping the lid of your stained glass box from opening too far. Can also be used for hanging small panels or suncatchers. Made from 20 ga wire, sold in bulk lengths or by the foot, available in 4 finishes.



Pewter #3030 - #3032



Gold #3035 - #3037



Nickel #3040 - #3042



Copper #3045 - #3047

PANEL HANGING CHAIN is offered in standard link and jack chain. All are quite strong and can handle up to 11 lbs (for the small link, jack & curbed chain) or 35 lbs for the medium link chain.

- Small Link Chain** has 3 links to the inch, made from approx 16 ga wire. Available in several finishes to match your work or patina. Sold by the foot and in 50 foot lengths.



- Medium Link Chain** has 2 heavy gauge links to the inch, made from approx 12 ga wire. Lacquered antique brass finish is very attractive. Good for hanging planters as well as panels. Sold by the foot and in 50 foot lengths. Antique brass finish ONLY.



- Jack Chain** is a strong chain that is attractive and easy to work with. Made from approx 14 ga wire and has a little more than 2 links per inch. Sold in four finishes by the foot and in 50 foot lengths.



- Copper Curb Chain** is attractive and easy to work with. Bright copper plated finish chain is sold by the foot and in 25 foot lengths.

#3012
approx. 4 links/inch#3013
approx. 3½ links/inch#3014
approx. 2½ links/inch

LAMP HANGING CHAIN is sold by the foot or in 100' lengths, has 1" links. Available in antique brass or black.



DECORATIVE CHAIN is used to highlight borders on small suncatchers and the like.

- Ball Chain** is featured in many design books (see *The Book of Fans*, #1393) as a decorative border effect. Helps prevent the foil from peeling off the edge of your work and adds structural strength. 1/8" diameter, nickel plated steel, takes solder well (use a hot iron!). Sold by the foot and in 100 foot lengths.



- Ladder Chain** makes a great border. Use the same as filigree brass came for a border on small panels or bevels. Take a 5" circle bevel, etch a design on it and wrap ladder chain around it. Looks like a million with the bright brass chain, or you can do it up in bright nickel finish. Made from approx 16 ga wire, sold by the foot and in 50 foot lengths.



Bright Brass #3015 - #3016



Bright Nickel #3018 - #3019

CHAIN		
DESCRIPTION	CATALOG #	
JEWEL CHAIN	BY THE FOOT	50 FT
Pewter	3030	3032
Nickel	3040	3042
Gold	3035	3037
Copper	3045	3047
SMALL LINK CHAIN	BY THE FOOT	50 FT
Antique Brass	3000	3001
Bright Brass	3002	3003
Black	3004	3005
Copper	3006	3007
Pewter	3008	3009
MEDIUM LINK CHAIN	BY THE FOOT	50 FT
Antique Brass	3010	3011
JACK CHAIN	BY THE FOOT	50 FT
Bright Brass	3022	3023
Bright Nickel	3024	3025
Copper	3026	3027
Black	3028	3029
COPPER CURB CHAIN	BY THE FOOT	25 FT
Small Link	3012	301225
Medium Link	3013	301325
Large Link	3014	301425
BALL CHAIN	BY THE FOOT	100 FT
Nickel Plated Steel	3020	3021
LADDER CHAIN	BY THE FOOT	50 FT
Bright Brass	3015	3016
Bright Nickel	3018	3019
LAMP CHAIN	BY THE FOOT	100 FT
Antique Brass	6130	61301
Black	6131	61311

JUMP RINGS (HANGING LOOPS) are a great way to put chain on your project. Rings are split for easy attachment of chain. Solder firmly to your work (get solder good and liquid to avoid "cold joints" which could let go later). Smaller rings work well for hanging suncatchers. Thread nylon monofilament through the ring for an invisible hanging string.

NOTE: sizes are nominal and may vary.
Approx 300 1/4" rings per Big Pack; 200 7/16" rings per Big Pack; 100 3/4" rings per Big Pack.

DESCRIPTION	JUMP RINGS CATALOG #S	
	10 PK	BIG PACK
1/4" Jump Rings	3140	3141
7/16" Jump Rings	3145	3146
3/4" Jump Rings	3150	3151

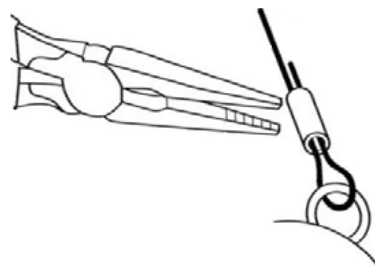


HANDY HANGERS (#3155) are solid 1/16" thick brass hangers to be used with zinc, copper or brass came framed panels. Solder these specially designed hangers on the inside of your "U" channel came to create the perfect hanging hook for your panels. Will work with square, rectangular, oval, round, octagon and other shaped panels. Comes with instructions. Sold in packs of 12.



SUNCATCHER HANGING LINE and **CRIMP CONNECTORS** will make hanging and displaying your small suncatchers neater and easier all at a reasonable price.

- **Suncatcher Hanging Line (#9395)** 30ft of black line
- **Crimp Connectors (#9396)** Package of 24



SUCTION CUP HANGERS have a hanging wire hook, suspended below for greater holding power. In clear, non-yellowing plastic. Use a drop of mineral or vegetable oil to hold the suction to the windowpane. Approximately 1-1/2" in diameter.

- Each (#3080)
- Pack of 10 (#3081)
- Pack of 50 (#3082)
- Pack of 100 (#3083)



MARKING PENS have been selected for their ability to show up on different colored glass, to hold up when grinding, and to clean up without a lot of pain. Available in regular "magic marker" type and paint markers.

SHARPIE MARKERS are available in several styles. Choose the marker which is most suitable for your glass. Available in:

- **Black Fine Point (#0920)** writes very well on glass and cleans off quickly with window cleaner.
- **Black Ultra Fine Point (#0935)** has a very fine point.
- **Metallic Silver Fine Point (#0922)** marker's quick drying ink makes it the perfect choice for marking dark glass. *Manufacturer's Tip ... store your Metallic marker with the tip pointing DOWN.*
- **White Paint Pen (#0922)** uses an oil-based that dries quickly that's water and fade resistant. The Sharpie White Paint Pen has an extra fine that reduces large puddles of white paint left by some pens.



PILOT PAINT MARKERS have ultra fine points. These paint markers work best for use with grinders or diamond band saws. The paint won't wash off. Available in:

- Gold (#0933)
- Silver (#0934)



BRASS PAINT MARKERS (#0932) are broad tip markers used for coloring solder joints to match brass came.

MARK STAY (#0930) — apply a thin film over your Sharpie lines so they won't wash away while grinding. Cleans up with soap and water or flux cleaner. 1 oz jar.



SAFETY ITEMS

SAFETY GLOVES have a knit material that is a soft, yet durable, blend of cotton and polyester that completely conforms to your hand. You may even forget you are wearing gloves. The thick textured latex-coated palm and fingers are chemical and water resistant and provide incredible grip. Light gray knit back and blue palm. Imported. Sold by the pair. Choose from:

- Small (#01601S)
- Medium (#01601M)
- Large (#01601L)
- Extra Large (#01601XL)



SAFETY GLASSES (#0160) are well worth the investment to protect your eyes when cutting, grinding & soldering. The wrap-around side panels help protect your eyes from the sides as well. Fits over most standard eyeglasses. These are a must. Save your eyes!! *NOTE: These safety glasses do not protect your eyes from UV rays.*



UV ABSORBENT SAFETY GLASSES (#0160-UV) are made of a special UV absorbent plastic which absorbs 99.9% of UV rays. These are well worth the investment to protect your eyes when using UV lamps, and the wrap-around side panels help protect your eyes when grinding or grozing glass. Fits over eyeglasses too. These are a must. Save your eyes!!



GLASS ADHESIVES

E-6000 is a strong adhesive that offers the dependable bonding power of epoxy, without the mess and waste of mixing. Available in:

- 0.18 oz tubes - pack of 3 (#93518)



- 0.5 oz tube (#93515)



- 1.0 oz tube (#93511)



- 1.0 oz tube E6000 Jewelry & Bead with 4 precision tips (#93517)



- 2.0 oz tube with tip (#93512)



- Large 3.7 oz. tube (#9351)



Dispenser tips for 3.7 oz tube (#93519) are also available.



EPOXY 330 (#9350) is the ideal medium for attaching glass to findings. It mixes fast, cures crystal clear, sets in about two hours, or just 10 minutes under a heat lamp. Sold in a set of two 1/2 oz. tubes (1 oz. total), enough for tons of jewelry.



AUSTRIAN CRYSTALS

AUSTRIAN CRYSTAL BY SWAROVSKI. These bright, glittering pieces of faceted full lead crystal can be incorporated into suncatchers (see the Krystal Motif bevel clusters) or they look good all by themselves.

DESCRIPTION	CRYSTALS SIZE (mm)	CAT #	BAIL SIZE
Ball	20	9005	B
Cross	20	9016	A
Five Pointed Star	20	9013	A
Heart	10	9010	A
Heart, Ab	10	90101	A
Heart, Rose	10	90102	A
Heart, Teal	10	90103	A
Heart, Garnet	10	90120	A
Heart, Amethyst	10	90121	A
Heart, Aqua	10	90122	A
Heart, Emerald	10	90123	A
Heart, Lt Amethyst	10	90124	A
Heart, Ruby Red	10	90125	A
Heart, Peridot	10	90126	A
Heart, Sapphire	10	90127	A
Heart, Topaz	10	90128	A
Heart	18	9011	A
Heart, Ab	18	90111	A
Heart, Rose	18	90112	A
Heart, Teal	18	90113	A
Heart, Ruby Red	18	90114	A
Octagon	20	9001	B
Ovaldrop	28	9014	B
Rainfall	18	9020	A
Rainfall, Ab	18	90201	A
Snowflake	20	9007	A
Snowflake	30	9024	C
Teardrop	40	9008	D
Teardrop	50	9009	D

All crystals above are clear except as noted. AB=Aurora Borealis (special iridescent type coating); ROSE is a delicate pink color



18 mm HEARTS:



10 mm HEARTS:



BIRTHSTONE CRYSTAL HEART SET (#90129) is a set of twelve 10mm Heart Crystals (one of each color shown above) to match each month's birthstone color!

NOTE: Birthstone Heart Crystals are also available individually. Use individual catalog numbers shown above.

PRESSED GLASS PRISMS (#9029) — shown at left) are an inexpensive alternative to Swarovski crystals. These 3¾" long prisms will provide an interesting sparkle and detail to your projects and suncatchers. Add them to your three dimensional Krystal Motif bevel suncatchers as sold in SECTION A.



BAILS are a formal means of hanging your crystals. Use bails to hang crystals from neck chains for inexpensive, but elegant jewelry. Bails squeeze on crystal, through hanging hole. Available in silver or gold finishes.

BAILS			
DESCRIPTION	CAT# EACH	CAT# PK OF 10	CAT# PK OF 50
SILVER FINISH			
A Bail	9050	9051	9052
B Bail	9060	9061	9062
C Bail	9070	9071	9072
D Bail	9080	9081	9082
GOLD FINISH			
A Bail	9055	9056	9057
B Bail	9065	9066	9067
C Bail	9075	9076	9077
D Bail	9085	9086	9087

JEWELRY FINDINGS

JEWELRY FINDINGS come in all descriptions for turning your fused pieces into jewelry. These findings are all high quality. They are well made to safely hold your fused work. They are classy in appearance ... tacky won't do! We offer a complete assortment of earrings, barrettes, and lapel pins. Use the special Epoxy 330, or E-6000 adhesive for fastening the finding to your glass creation.

BAILS — Designed to be attached (Epoxy 330 is recommended) to the back of a fused glass piece and still have the hanging loop positioned over the top of the jewelry while not obscuring the beauty of the glass. Many styles to choose from.

ILLUSTRATIONS ARE APPROX ACTUAL SIZE.

LEAF BAILS
Sterling Silver Plated

Small Leaf - Silver
#9391 - Pack of 25
#93916 - Pack of 6



Medium Leaf - Silver
#9392 - Pack of 25
#93926 - Pack of 6



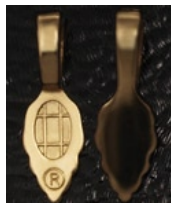
Large Leaf - Silver
#9393 - Pack of 25
#93936 - Pack of 6

LEAF BAILS
18k Gold Plated

Small Leaf - Gold
#9388 - Pack of 25
#93886 - Pack of 6



Medium Leaf - Gold
#9387 - Pack of 25
#93876 - Pack of 6



Large Leaf - Gold
#9389 - Pack of 25
#93896 - Pack of 6

LEAF BAIL SIZES (Measurements include the loop in the length):

- Small bails are 6 mm wide by 15 mm long (approx 5/8" long)
- Medium bails are 8 mm wide by 21 mm long (about 7/8" long)
- Large bails are 10 mm wide by 25 mm long (approx 1 inch long)

LEAF EARRING BAILS



Earring Bail - Silver
#9405 - Pack of 24
#94056 - Pack of 6



Earring Bail - Gold
#9406 - Pack of 24
#94066 - Pack of 6

HEART BAILS
Sterling Silver Plated

Small Heart - Silver
#9470 - Pack of 25
#94706 - Pack of 6



Med Heart - Silver
#9471 - Pack of 25
#94716 - Pack of 6



Large Heart - Silver
#9472 - Pack of 25
#94726 - Pack of 6

HEART BAILS
18k Gold Plated

Small Heart - Gold
#9475 - Pack of 25
#94756 - Pack of 6



Med Heart - Gold
#9476 - Pack of 25
#94766 - Pack of 6



Large Heart - Gold
#9477 - Pack of 25
#94776 - Pack of 6

HEART BAIL SIZES (Measurements include the loop in the length):

- Small bails are 9 mm wide by 16 mm long (approx 5/8" long)
- Medium bails are 11 mm wide by 20 mm long (about 7/8" long)
- Large bails are 13.5 mm wide by 23 mm long (approx 1 inch long)

HEART EARRING BAILS



Earring Bail - Silver
#9407 - Pack of
12 right + 12 left
#94076 - Pack of
3 right + 3 left



Earring Bail - Gold
#9408 - Pack of
12 right + 12 left
#94086 - Pack of
3 right + 3 left

HEART EARRING BAILS

(Measurements include the loop in the length):

- Heart earring bails are 9 mm wide by 13 mm long

LEAF BAIL ASSORTMENT (#9404) is the perfect way to get a nice assortment of all of the LEAF BAILS - 16 bails in all. You get:

- 2 Large Gold Plated Leaf Bails
- 2 Large Sterling Silver Plated Leaf Bails
- 2 Small Gold Plated Leaf Bails
- 2 Small Sterling Silver Plated Leaf Bails
- 2 Medium Sterling Silver Plated Leaf Bails
- 2 Medium Gold Plated Leaf Bails
- 2 Gold Plated Earring Leaf Bails
- 2 Sterling Silver Plated Earring Leaf Bails

HEART BAIL ASSORTMENT (#9478) is the perfect way to get a nice assortment of all of the HEART BAILS - 16 bails in all. You get:

- 2 Large Gold Plated Heart Bails
- 2 Large Sterling Silver Plated Heart Bails
- 2 Medium Sterling Silver Plated Heart Bails
- 2 Medium Gold Plated Heart Bails
- 2 Small Gold Plated Heart Bails
- 2 Small Sterling Silver Plated Heart Bails
- 2 Sterling Silver Plated Earring Bails
- 2 Gold Plated Earring Bails

PAW BAILS
Sterling Silver Plated



Small Paw - Silver
#9482 - Pack of 25
#94826 - Pack of 6

FISH BAILS
Sterling Silver Plated



Small Paw - Silver
#9483 - Pack of 25
#94836 - Pack of 6

CELTIC BAILS
Sterling Silver Plated



Small Celtic - Silver
#9484 - Pack of 25
#94846 - Pack of 6

PAW BAIL SIZES

(Measurement includes the loop in the length):

- Small bails are 9.7 mm wide by 17.6 mm long

FISH BAIL SIZES

(Measurement includes the loop in the length):

- Small bails are 5.8 mm wide by 21.6 mm long

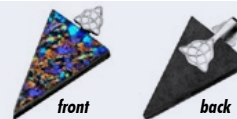
CELTIC BAIL SIZES

(Measurement includes the loop in the length):

- Small bails are 9.7 mm wide by 16.6 mm long

DOUBLE BAILS

Double sided bails have the motif visible on both sides of the sterling silver plated bail



Celtic Double Bail
#9486 - Pack of 25
#94866 - Pack of 6



Fish Double Bail
#9489 - Pack of 25
#94896 - Pack of 6



Heart Double Bail
#9488 - Pack of 25
#94886 - Pack of 6



Leaf Double Bail
#9487 - Pack of 25
#94876 - Pack of 6

DOUBLE BAIL SIZES (Measurements include the loop in the length):

- Celtic Double bails are 7 mm wide by 25 mm long
- Fish Double bails are 6.6 mm wide by 25.8 mm long
- Heart Double bails are 11 mm wide by 23.6 mm long
- Leaf Double bails are 7.7 mm wide by 21.9 mm long

Pendant Plates

These decorative plates provide a secure and decorative way to attach your fused jewelry to any style of necklace. Available in several styles and finishes. **ALL ILLUSTRATIONS ARE APPROX ACTUAL SIZE.**

ELEGANT PENDANT PLATES — Our broad selection of Elegant Pendant Plates will give you the flexibility you need to match necklace finishes, cabochon sizes and your customer's tastes. The deep setting will frame your fused glass pieces giving your jewelry an elegant appearance.

All Elegant Pendant plates are cast from lead free pewter and are then given antique gold, pewter and copper finishes.

Elegant Pendant Plates are sold individually.

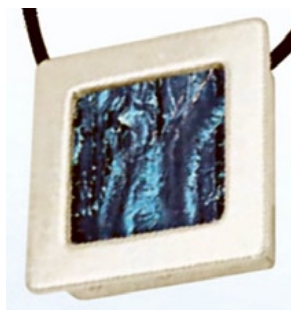
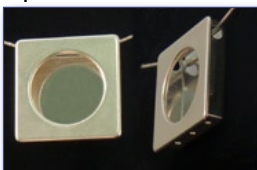


ELEGANT PENDANT PLATE ASSORTMENTS contain one pendant plate of each finish, size and style. Each assortment includes one large and small round pendant plate and one large and small square pendant plates - four in each assortment.

- Copper Assortment (#96190)
- Gold Assortment (#96191)
- Silver Assortment (#96192)

GALLERY FRAME PENDANTS allow you to frame your fused creations in sterling silver plated gallery frames. All are solidly constructed and plated with .999 pure silver. Slide your fused piece into the frame, thread jewel chain or leather jewelry cord through the top and you have an amazing finished piece. There are three holes at the bottom of each frame. Hang crystals or beads to add detail and interest. Change your insert at any time to match your mood or attire. Gallery Pendants are available in four styles.

Gallery Frame Pendants are sold individually.



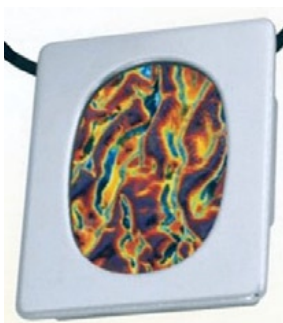
Square Pendant
accepts 1 x 1 x 5/16" (8mm)
#9670



Round Pendant
accepts 1 x 1 x 1/4" (6mm)
#9671



Rectangle Pendant
#96726 - accepts 1 x 1-3/8 x 1/4" (6mm)
#96728 - accepts 1 x 1-3/8 x 5/16" (8mm)



Oval Pendant
accepts 1 x 1-3/8 x 1/4" (6mm)
#9673

ELEGANT ROUND PENDANT PLATE SIZES:

- Small pendant plates are 18 mm outside diameter and 16 mm diameter on inside of rim
- Large pendant plates are 25 mm outside diameter and 22 mm diameter on inside of rim



Copper Pendant Plate
Small #9605
Large #9600



Gold Pendant Plate
Small #9606
Large #9601



Silver Pendant Plate
Small #9607
Large #9602

ELEGANT SQUARE PENDANT PLATE SIZES:

- Small pendant plates are 18x18 mm outside and 16x16 mm on inside of rim
- Large pendant plates are 25x25 mm outside and 21x21 mm on inside of rim



Copper Pendant Plate
Small #9615
Large #9610



Gold Pendant Plate
Small #9616
Large #9611



Silver Pendant Plate
Small #9617
Large #9612

SILVER PLATED CAST PEWTER PENDANTS

— are heavily silver plated and are slightly recessed to easily accept glued-in cabochons for pendants.



Round Pendant
(accepts 38mm round)
#9665 - Pack of 2



Oval Pendant
(accepts 22x30mm oval)
#9660 - Pack of 2



Oval Pendant
(accepts 18x25mm oval)
#9661 - Pack of 4



Round Pendant
(accepts 20mm round)
#9666 - Pack of 4

NECK WIRES AND NECKLACES — choose from silver or gold plated styles for your glass pendants and beads.

LEATHER NECK CORDS include lobster claw closure and two inches of silver finish chain. This allows you to add up to 2" of added length to the cord for comfort or appearance. Cords are approx 2mm in diameter so all of our Aanraku bails will fit. Lengths do not include the added 2" chain. All are sold in a BUNDLE OF 10 PIECES, ALL THE SAME SIZE. Three lengths are available:

- 16" Leather Neck Cords (#9517) pack of 10
- 18" Leather Neck Cords (#9518) pack of 10
- 20" Leather Neck Cords (#9519) pack of 10



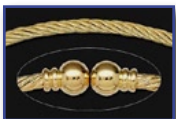
NECK WIRES are made specifically for threading flame worked beads but you can hang any piece of interest with our regular bails, like the frog cab at right. These neck wires are 1 mm in diameter, a size that will pass most beads. The ball end (see photo inset) is threaded to the end of the wire to allow quick and easy changes. Sold individually. Choose from:

- Silver Plated (#9510) - 1mm diameter wire 16" length
- Gold Plated (#9511) - 1mm diameter wire 16" length
- Silver Plated (#9515) - 1.5mm diameter wire 18" length



TWISTED NECKLACES are heavier 3.5 mm diameter composed of several twisted wires. Unscrewing the 7.5 mm bead ends (see photo inset) let you slide jewelry bails (sold separately) onto the wire. These necklaces will fit our Large Bails only. Necklaces are 16" long, overall. Choose from:

- Silver Plated (#9520)
- Gold Plated (#9521)



Bail sold separately

BRACELETS — Show off your fused glass jewels with these beautiful bracelets in silver and gold plate. These are nicely finished silver plated and gold plated Bracelets. Flat plates allow for convenient attachment of fused glass cabs. A drop of epoxy and you are set. All bracelets are 8" long overall (closer to 7" once the clasp is closed) and are sold in sets of two bracelets. Available with round, oval or square plates for your cabs.



SILVER PLATED:



- 10mm Round Plates (#9500) - pack of 2
- 10mm Square Plates (#9501) - pack of 2
- 10x14mm Oval Plates (#9502) - pack of 2



GOLD PLATED:



- 10mm Round Plates (#9505) - pack of 2
- 10mm Square Plates (#9506) - pack of 2
- 10x14mm Oval Plates (#9507) - pack of 2



ADJUSTABLE RING - stamped rings made from brass and plated in Sterling Silver. Produced in the United States.

- Square (#9551) holds a 16x15.8mm cabochon
- Round (#9552) holds a 18mm diameter cabochon



EARRING POSTS are all surgical quality stainless steel. Posts all have "cups" which provide a more secure attachment of your art to the post. Posts include highest quality clutches. Clutches have surgical stainless steel fronts (the part that touches your ear), nickel plated knobs and rubber gripper insides for secure hold. We offer these clutches as a separate item, along with Comfort Clutches which have a wide, clear plastic disk to keep larger earrings from sagging. Comes in Nickel or Hamilton Gold Finish.



GOLD DEEP CUP POSTS



NICKEL DEEP CUP POSTS

#9215
Nickel Clutch

EARWIRES dangle your creations from your ears. To use, epoxy a silver bead cap to your creation. Open the loop at bottom of the earwire with needle nose pliers and slip the bead cap on. Choose from:

- Traditional Ball and Spring Fish Hook
- 24K Gold Plated Fish hook w/ 3mm crystal Rhinestone
- Surgical Stainless Steel (silver color) European style Earwire with heart motif and a closeable clasp

#9370
Fish Hook w/
Rhinestone#9310
Gold Fish Hook w/
Ball & Spring#9380
Silver Fish Hook w/
Ball & Spring#9375
Silver European
Earwire

DESCRIPTION	EARRING POSTS, EARWIRES AND CLUTCHES CATALOG #S			
	1 PAIR	10 PAIR	50 PAIR	100 PAIR
NICKEL FINISH				
10mm Deep Cup Posts, W/ Clutch	9210	9211	9212	9213
Nickel Clutches	9215	9216	9217	9218
GOLD FINISH				
4mm Deep Cup Posts, W/ Clutch	9320	9321	9322	9323
10mm Deep Cup Posts, W/ Clutch	9330	9331	9332	9333
EARWIRES				
24k Gold Plated Fish Hook W/ 3mm Rhinestone	9370	9371	9372	9373
Silver European Earwire W/ Heart Motif	9375	9376	9377	9378
Hamilton Gold Fish Hook W/ Ball & Spring	9310	9311	9312	9313
Sterling Silver Fish Hook W/ Ball & Spring	9380	9381	9382	9383

FANCY BAILS are used for attaching your work to something with a loop. The loop can then be used to attach your creation to a chain or other jewelry fitting. Use Epoxy 330 to hold these bails to your creation. Both styles are available in Nickel or Hamilton gold finishes.

- **MING LEAVES** fold in half to create a loop. Ming Leaves are 7/8" long, and fold to about 3/16"
- **4 PRONG BEAD CAPS** can be spread apart for larger items, or clamped down on thinner things

DESCRIPTION	FANCY BAILS CATALOG #S			
	EACH	10 PK	50 PK	100 PK
4 PRONG BEAD CAP BAILS				
Nickel Finish	9235	9236	9237	9238
Gold Finish	9335	9336	9337	9338
MING LEAF BAILS				
Nickel Finish	9240	9241	9242	9243
Gold Finish	9340	9341	9342	9343

Gold Ming
Leaf BailSilver Ming
Leaf BailGold Bead Cap
BailSilver Bead
Cap Bail

HAIRPINS - 63mm long bobby pin-style have a 10mm flat pad for bonding of fused cabochons or other ornaments. Sold in packs of 6

- **Silver Hairpins (#9525)** - pack of 6
- **Gold Hairpins (#9526)** - pack of 6

#9525
Silver Hairpin
(pack of 6)#9526
Gold Hairpin
(pack of 6)

BAR PIN BACKS are high quality, nickel plated with a catch that works. Tip of pin is covered by catch (to prevent pokes and snags), and catch closes firmly to prevent accidental loss. Backing has three holes to allow secure gluing. Available in three sizes.

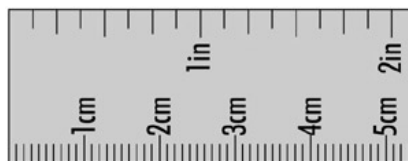


SNAP BACK BARRETTE for creative hair decor. Nickel plated, with secure fastener and springy insert to keep barrette where it belongs. Two holes and two recessed ridges give glue something to grip to. Back is 3 1/4" long.

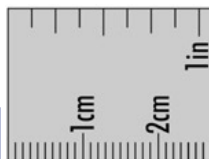
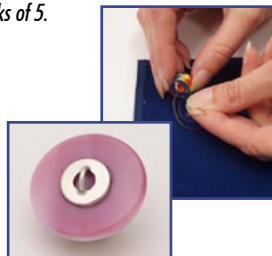


DESCRIPTION	BAR PIN BACKS, BARRETTES CATALOG #S			
	EACH	10 PK	50 PK	100 PK
1" Bar Pin	9220	9221	9222	9223
1 1/4" Bar Pin	9225	9226	9227	9228
1 1/2" Bar Pin	9230	9231	9232	9233
Barrette Backs	9245	9246	9247	9248

MAGNETIC BROACH (#9420) can be used to attach a broach to any outfit without poking holes in your clothes with this unique design. Glue the bar to your broach, 2 sturdy magnets hold broach firmly in place during wear. Nickel-free silver plated bar measures $1\frac{3}{4}$ " x $\frac{1}{2}$ ", sold individually.



BUTTON BACKS (#9421) can be used to create unique buttons. Simply attach your cabachon with glass adhesive, let dry and attach your fused glass buttons to hats, jackets, tops and more! Findings feature a nickel free silver finish. Backs measure $\frac{9}{16}$ " diameter and are sold in packs of 5.



BOOKMARKS are available in 3 finishes. These squiggle bookmarks are a quick and easy gift idea. Watch them sell at craft shows! Add your own fused glass cab (we used a small gold bail on our example at right) or one of your hand made beads to personalize this useful gift. Sold in packs of two bookmarks in either gold or silver finishes. 6" long and includes "o" ring.

- **COPPER (#9450-BMC)**
- **GOLD (#9450-BMG)**
- **SILVER (#9450-BMS)**



WINE BOTTLE STOPPERS make terrific gift items when you attach your handmade bead or fused glass cabochon. All stoppers are stainless steel with a distinctive ribbed rubber neck for a sure but gentle seal. The stopper portion is approximately 2-1/4" long with a maximum diameter of 15/16.

- **FLAT TOP (#9410-FMT)** flat top is approx 40x50mm
- **ROUND TOP (#9410-RMT)** recessed spot is approximately 25mm ID
- **SHORT MANDREL TOP (#9410-SMT)** mandrel accepts bead up to 30mm in length



shown at 33%
actual size

HELPFUL HINT: Bottle stoppers are for multiple short term use not to exceed one week at a time. They are for display and serving not long term storage which can cause pitting and flaking of the plating due to acidic buildup in the wine from oxidation.

3 HOLE STAINLESS STEEL WINE BOTTLE STOPPER HOLDERS (#9410-3HB) - holds 3 Wine Bottle Stoppers (sold separately) at the ready.



KEY FINDERS make handy gift items. Everybody has one, so why not a classy one with a fused glass decoration. Nickel plated, approximately $\frac{3}{2}$ " in length.

- **FLAT TOP (#9461)** - for your fused pieces measures approximately 40 x 50 mm

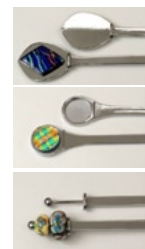


LETTER OPENERS are useful gift items. These bright silver finish letter openers come in three different styles, including one that works well with your lampworked beads. Attach your handmade bead or fused glass cabochon. All openers are brightly chrome plated and well polished for a professional appearance.

- **FLAT TOP (#9415-FLO)** blade length 8"; flat top is approx 40x50mm
- **ROUND TOP (#9415-RLO)** blade length $5\frac{3}{4}$ "; recessed spot is approximately 25mm ID
- **SHORT MANDREL TOP (#9415-SLO)** blade length 8"; mandrel accepts bead up to 30mm in length

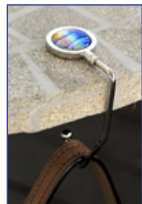


shown at 33%
actual size



PURSE HANGERS are perfect items for keeping a purse safe and secure when dining out. Don't keep your bag in your lap or on the floor. Hang it from our PURSE HANGER and you know where it is - safe and sound. Hanger is about 4" long overall, with a recess to fit a 25 mm (about an inch) diameter cabochon or fused piece. Non-slip rubber backing on back keeps things in place.

- **FLAT TOP (#9429)** - for your fused pieces measures approximately 40 x 50 mm
- **ROUND TOP (#9430)** - made with a recessed spot to fit a 25 mm (about an inch) diameter cabochon or fused piece (not included)



HEART COMPACT (#9425) has a bright nickel finish and measures approximately 2-1/8 x 2-3/8" overall. We've made one up (at right) with a fused heart using CBS Crinklized dichroic. Makes a lovely gift!



PILL BOX (#9432) - if you have to tote around your medication, why not do it in style! This dainty pill box is conveniently separated into 3 compartments and has a shiny nickel finish. No more ugly plastic boxes to cause embarrassment. Create a custom glass cabochon to really make your box shine! Box measures 2" round and features a 1" round recess to adhere your glass gem.

